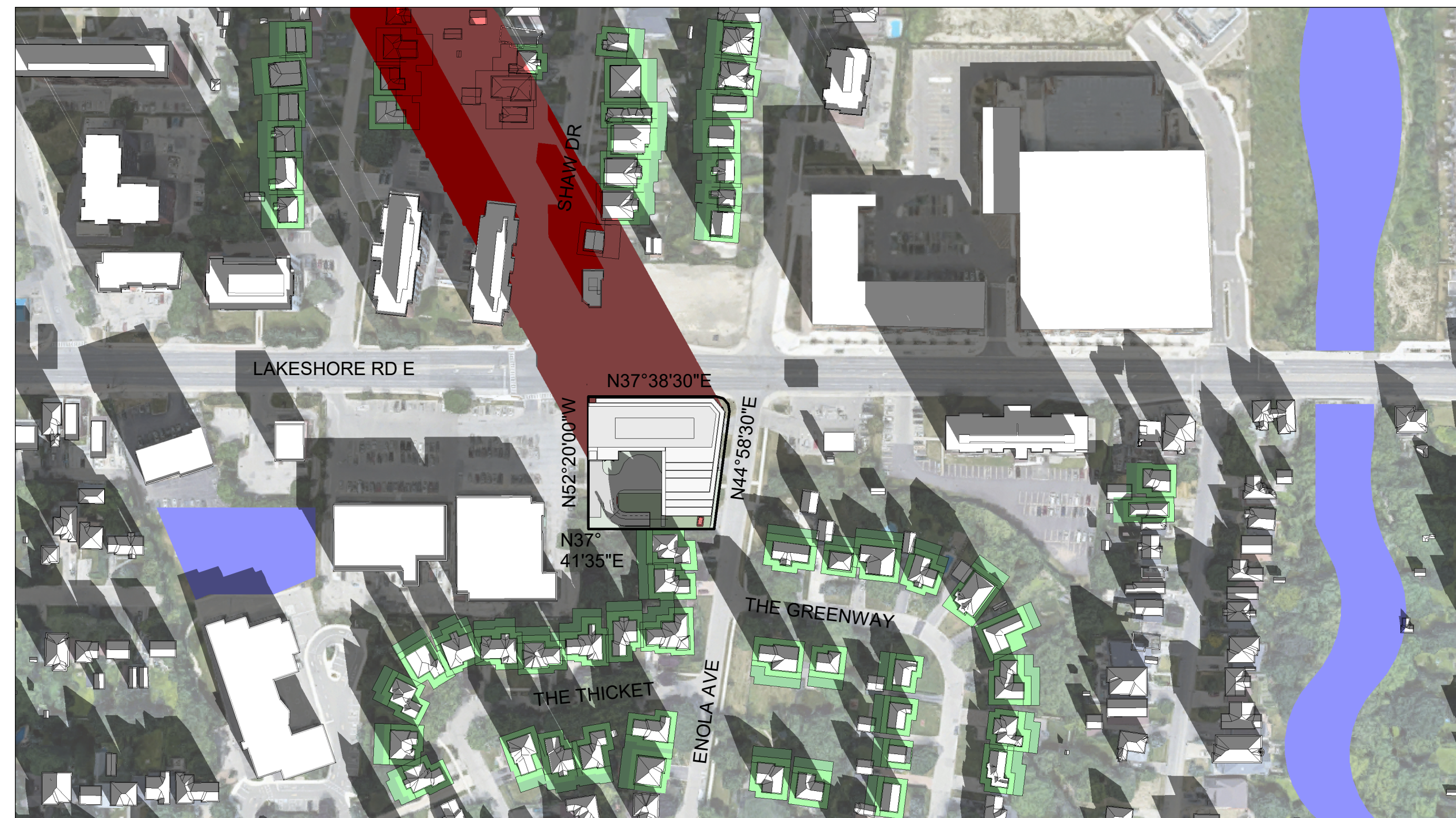
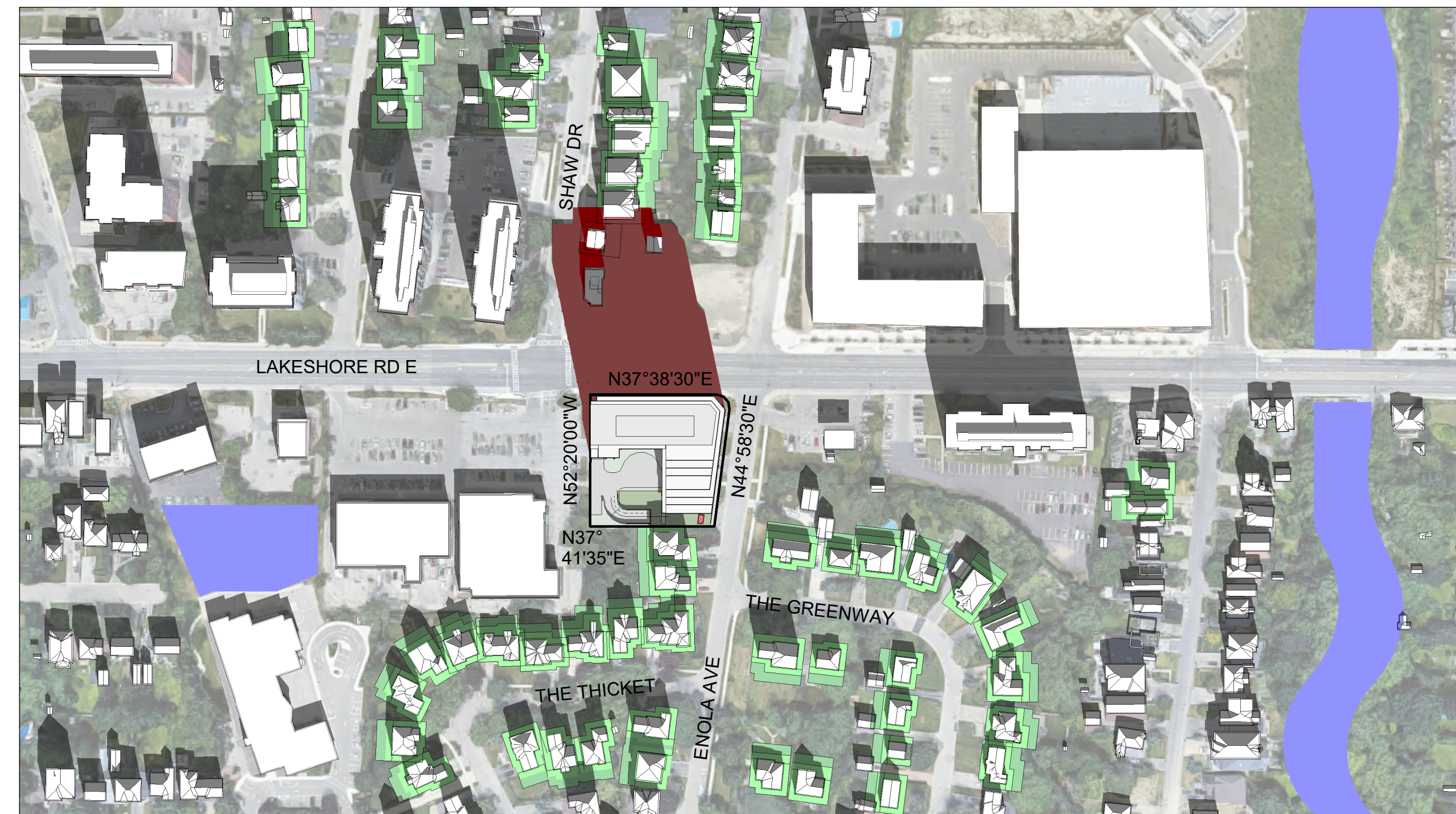


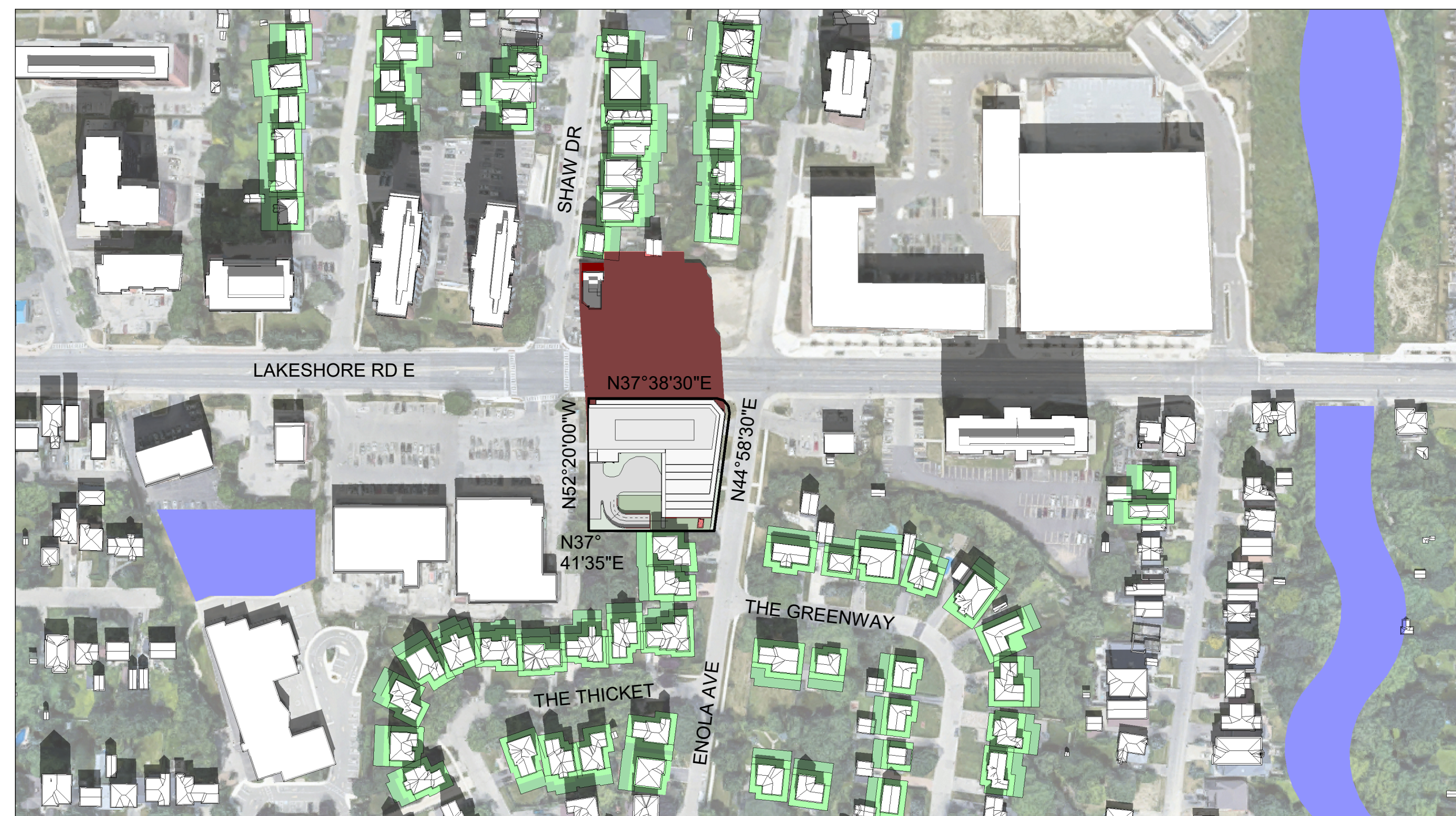
This drawing, as an instrument of service, is provided by and is the property of Turner Fleischer Architects Inc. The contractor must verify and accept responsibility for all dimensions and conditions on site and must notify Turner Fleischer Architects Inc. of any variations from the supplied information. This drawing is not to be scaled. The architect is not responsible for the accuracy of survey, structural, mechanical, electrical, etc. information shown on this drawing. Refer to the appropriate consultant's drawings before proceeding with the work. Construction must conform to all applicable codes and requirements of all relevant taxing jurisdictions. The contractor must assume full responsibility and bear costs for any corrections or damages resulting from his work.



SEPTEMBER 21 - 7:05



SEPTEMBER 21 - 8:35



SEPTEMBER 21 - 9:12



SEPTEMBER 21 - 10:12

- CONTEXT SHADOW
- PROPOSED DEVELOPMENT
- 3.0m NO IMPACT ZONES
- 7.5m NO IMPACT ZONES
- PUBLIC OPEN SPACES, GREEN LANDS

1	2020-06-16	ISSUED FOR REZONING	OV
#	DATE	DESCRIPTION	BY

PROJECT
18.150FS
420 LAKESHORE ROAD E, MISSISSAUGA, ON

DRAWING
SHADOW STUDIES

PROJECT NO.
18.150FS
PROJECT DATE
2020-06-16
DRAWN BY
Author
CHECKED BY
Checker
SCALE
As indicated



DRAWING NO.
RZ906

